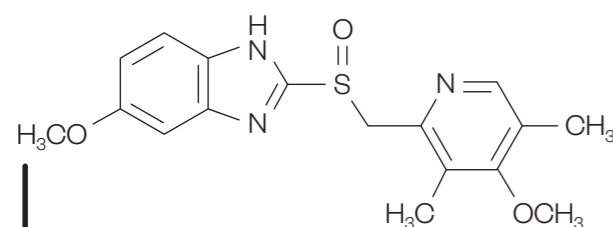


THE DEVELOPMENT AND SAFETY OF PROTON PUMP INHIBITORS

Since the discovery of omeprazole in 1979, dispensing of proton pump inhibitors (PPIs) in England has increased more than 100-fold, and several products are now available without prescription. Although PPIs are effective and generally well tolerated, observational studies suggest an association with several adverse effects. Further trials are needed to establish causal relationships.

DAWN CONNELLY



1979
Omeprazole, a PPI that blocks gastric hydrogen potassium ATPase and inhibits gastric acid secretion, is discovered by Swedish pharmaceutical company Astra Hässle. Human trials begin the following year.

OMEPRAZOLE MOST WIDELY PRESCRIBED

Omeprazole was the most commonly dispensed PPI in the community in England in 2015, and the second most commonly dispensed medicine overall (simvastatin came first with 34.4m items).

- 30.1M Omeprazole
- 22.9M Lansoprazole
- 1.5M Esomeprazole
- 1.1M Pantoprazole
- 0.4M Rabeprazole

